

Time setting and block out time setting

Current time setting:

As part of the water heating cycle the system references the time on the controller. The clock must be set to ensure correct operation at desired times. The current time can be set in the Clock Setting Mode as described below. (Refer to figure 13)

*Note

There is no need to adjust the time setting for the daylight saving period.

1. Switching to Clock Setting Mode
Press the “Enter” key in the Clock Display Mode to switch to the Clock Setting Mode. Time Display starts flashing once the mode is switched.
2. Setting the Clock
The time setting can be adjusted by pressing “Up” and “Down” keys. Fast forward and rewind are available by pressing and holding down a key.
3. Confirming Time Setting
After the clock is adjusted to the current time, press the Enter key to confirm the setting. The time display stops flashing and comes on once the setting is finished.

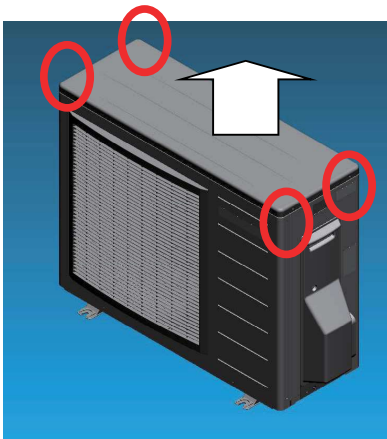
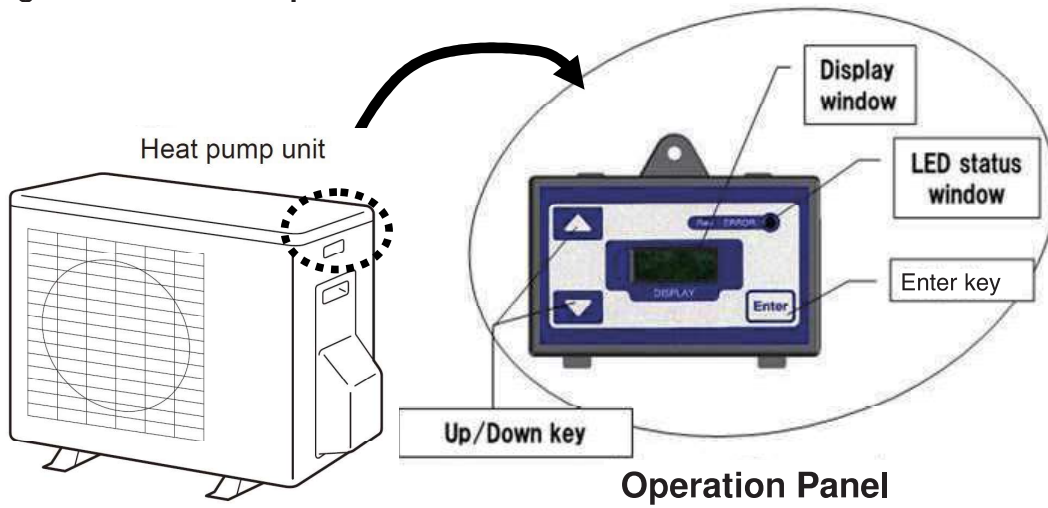
*Caution

The display automatically goes back to the Clock Display Mode when no panel operation is performed for more than 60 seconds in the Clock Setting Mode. If this occurs, changes made will not be reflected to the setting. Depending on the set time, the system starts the heating cycle.

*Note

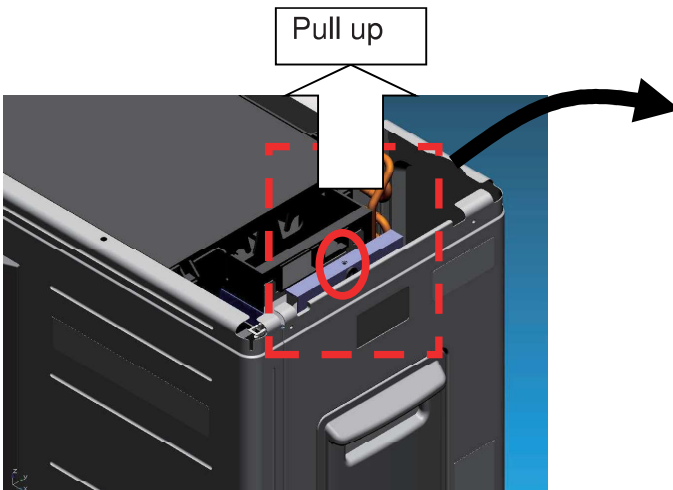
When no panel operation is performed for more than 60 seconds the display is switched to the Display Sleep Mode and turns off. Display Sleep Mode is cancelled when Up, Down or Enter key is pressed.

Figure 12 How to operate the controller



How to remove the operation panel

- 1.Remove Top Panel (4 screws)
- 2.Remove the screw
- 3.Pull up Operation Panel



Operation Panel

Block out time setting mode

This mode is used to set the block out time that blocks the heat pump unit operation within the set time. Block out times are used if the customer has a time of use tariff or takes advantage of optimal solar power gain.

Change the mode

Press and hold down Up and Down keys together in the clock display mode to go to the maintenance mode. Use up or Down key to navigate to “bo” menu and press the Enter key. Once the mode is changed, ‘bo’ and ‘00XX’ (00 = start time hour (24 hour clock), XX = end time hour (24 hour clock)) are displayed. (Initial setting = 00 o'clock for both start and end)

Adjust set block out start time

Press Up or Down key and ‘00’ (start time) in ‘00XX’ starts flashing and ‘XX’ (end time) illuminates. Now the block out start time can be adjusted. Setting can be performed only in hour increments, not in minutes.

Set block out start time

Press the Enter key to set the desired time setting. After the start time is set, the start time display stops flashing. The end time display starts flashing at the same time.

Adjust block out end time

Set to the desired end time by using Up and Down keys. Setting can be performed only in hour increments, not in minutes.

Set block out end time

Press enter key to adjust the desired time setting. After the end time is set, then it starts to display ‘bo’ and ‘00XX’ (00 = start time, XX = end time) by turns.

Go back to clock display mode

Hold down Enter key to go back to the clock display mode. It will automatically go back to the clock display mode when no panel operation is performed for more than 60 seconds. Block out time setting mode cannot be set unless the end time setting is confirmed.

Cancel block out setting

To cancel the block out setting, set both start and end times to the same time.

✳️Example setting

