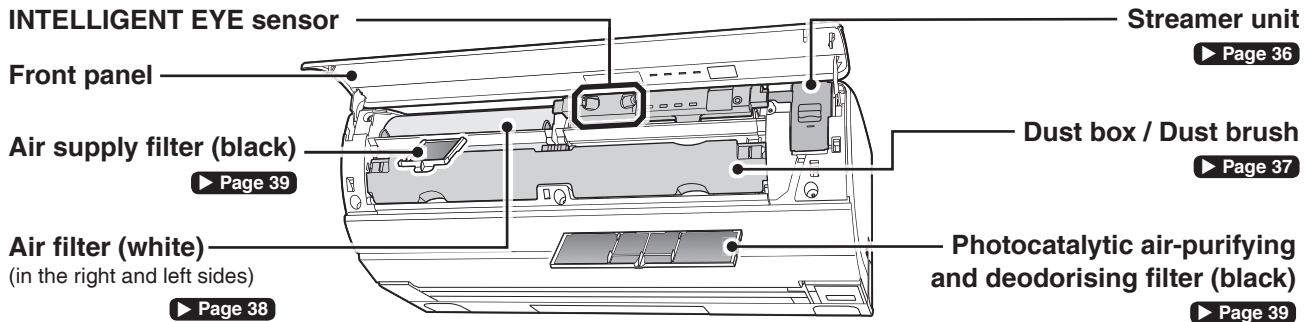


Cleaning (for service personnel)



CAUTION

- Be sure to stop the operation and turn off the circuit breaker before cleaning.
- For care and cleaning, call service personnel.



Front panel

When?

When you find dirt or dust.

How?

- Wipe gently with a soft cloth moistened with water or neutral liquid detergent.
- Make sure to clean the back of the front panel.



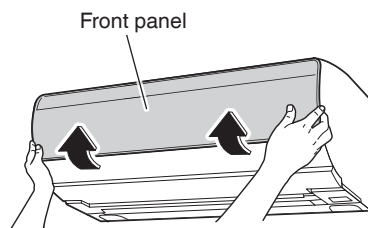
CAUTION

- When removing and attaching the front panel, stand on a solid, stable base and take care not to fall.
- When removing and attaching the front panel, support the panel securely with your hands to prevent it from falling.

Removing the front panel

1. Turn off the circuit breaker.

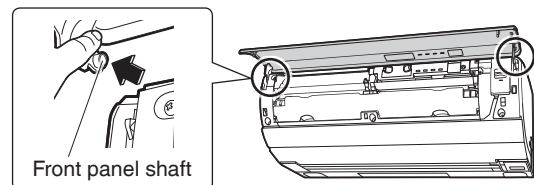
2. Hold the panel at both ends and open until the panel stops.



- Pushing further up from the stopping position allows the panel to be removed more easily.

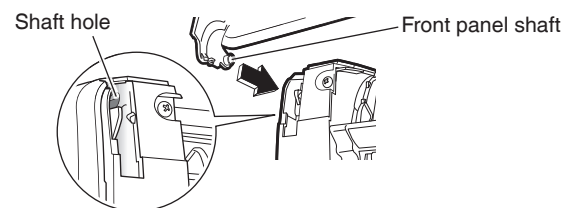
3. Remove the front panel.

- While pushing the left-side front panel shaft outward, push up the front panel and remove it. (Remove the right-side front panel shaft in the same manner.)
- After removing both front panel shafts, pull the front panel toward yourself and remove it.



Attaching the front panel

1. Insert the right and left front panel shafts on the front panel into the shaft holes one at a time.



2. Close the front panel slowly and press on both sides of the front panel.

Confirm that the front panel is securely installed.

Indoor unit / INTELLIGENT EYE sensor

When?

When you find dirt or dust.

How?

- Wipe gently with a soft, dry cloth.
- Make sure to clean the lens part of the INTELLIGENT EYE sensor.

CAUTION

- Do not touch the aluminium fins of the indoor unit. (It may cause an injury.)
- Do not use the following to clean the air conditioner. (It may cause deformation, discolouration or scratches.)
 - Water hotter than 40°C
 - Volatile liquid such as benzene, petrol and thinner
 - Polishing compound
 - Rough materials such as scrubbing brush

Streamer unit

When?

When the **TIMER lamp (orange)** blinks or once in a season.




The **TIMER lamp** blinks to indicate that the streamer unit needs cleaning when the total operation time of the air conditioner exceeds 1,800 hours. (**Streamer unit cleaning indicator**) Clean the streamer unit.

Streamer discharge is disabled while the lamp is blinking.

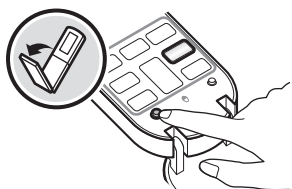
How?

- 1) Soak the streamer unit in lukewarm water or cold water (for about 1 hour).
- 2) Use a cotton bud or soft cloth to clean the unit.
(**Wear rubber gloves.**)
- 3) Wash the unit with running water and drain it thoroughly.
- 4) Dry the unit in a well-ventilated shady area (for about 1 day).

Reset the indicator after cleaning.

Turn on the circuit breaker, and press  and then  while the air conditioner is not operating.  **Page 8**

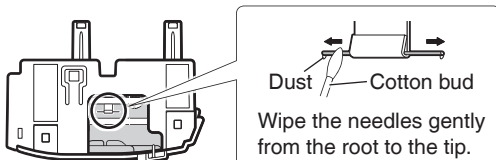
- The streamer unit cleaning indicator goes out.



If dust adheres to the needles

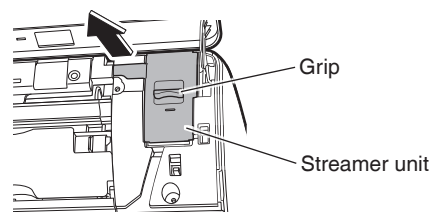
Gently wipe the dust from the needles with a soft material such as a cotton bud, moistened with water or neutral liquid detergent.

When wiping dust off, be careful not to deform the needles. A deformed needle will lower the deodorisation ability.



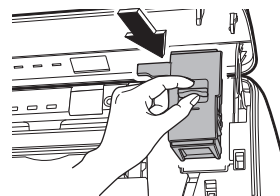
Removing the streamer unit

- 1) **Hold the grip of the streamer unit and pull it toward yourself.**



Attaching the streamer unit

- 1) **Insert the streamer unit all the way in.**



Attention

- If you cannot remove dirt or dust completely, add neutral liquid detergent to lukewarm water or cold water and soak the filter in it.
- Follow the instructions regarding neutral liquid detergent when you use it. Wash the streamer unit thoroughly with water after using detergent to remove any residue.
- Be careful not to leave any lint on the streamer unit. (Lint may cause the unit to malfunction.)
- Do not disassemble the streamer unit.

Cleaning (for service personnel)

Dust box / Dust brush

When?

When the **MOLD PROOF / CLEANING FILTER lamp (green)** blinks.

The MOLD PROOF / CLEANING FILTER lamp blinks to indicate that the dust box needs cleaning when there is dust in the dust box or when the dust brush gets dirty with the CLEANING FILTER operation (automatic or manual). (**Dust box cleaning indicator**) Clean the dust box.

CLEANING FILTER operation cannot be performed while the lamp is blinking.

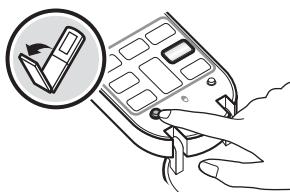
How?

- Use a vacuum cleaner to remove dust or wash with water.
- If you have washed the dust box with water, dry it well in the shade.

Reset the indicator after cleaning.

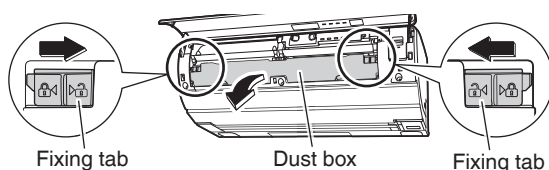
Turn on the circuit breaker, and press **RESET** and then **APPLY** while the air conditioner is not operating. ▶ **Page 8**

- The dust box cleaning indicator goes out.

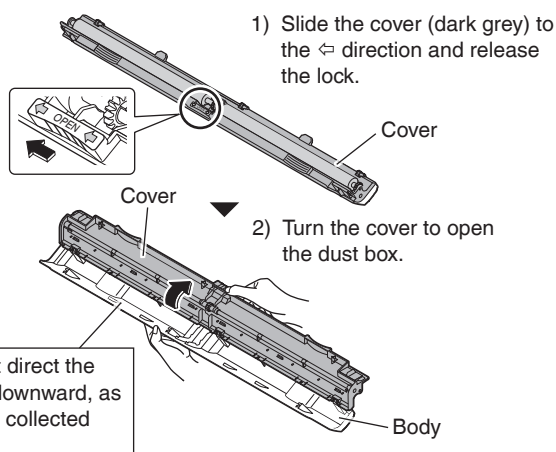


Removing the dust box

1. Slide the right and left fixing tabs (blue) inwards and slowly pull the dust box out with both hands.

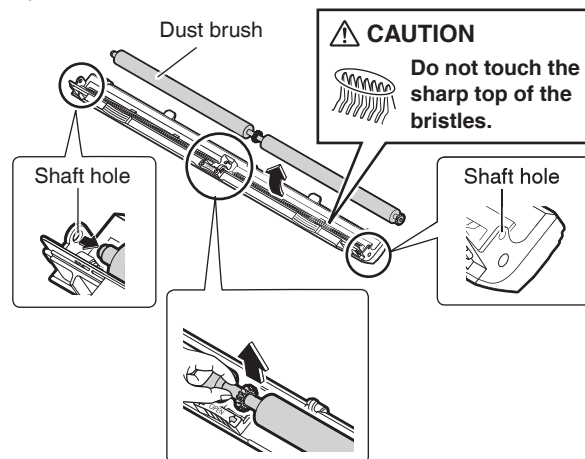


2. Open the dust box.



< Removing or attaching the dust brush >

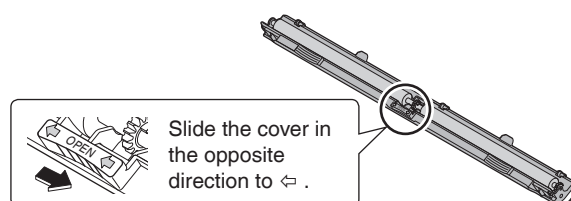
- 1) Pull the centre of the dust brush.
- 2) Take out the dust brush from the right-side and left-side shaft holes.
- 3) Pull out the dust brush.
For installation, attach the dust brush to the shaft holes, and push it in the dust box.



Confirm that the dust brush is securely attached. Otherwise, the dust brush may not rotate and the CLEANING FILTER operation may not be performed.

Attaching the dust box

1. Close the dust box, and then slide the cover to lock the dust box.



2. Hold the dust box with both hands and attach it in the unit so that the dust brush faces the air conditioner side.
3. Slide the fixing tabs at both ends outwards.

CLEANING FILTER operation will not be correctly performed if the tabs are not securely locked.

When you clean the filters, open the front panel and remove the dust box.

Air filter (white)

If the AUTO CLEANING FILTER operation is set to "On", basically no care is required. ► **Page 28**

When you are aware of dirt, such as when oil or nicotine is attached to the air filter or when the AUTO CLEANING FILTER operation is set to "Off", clean the filter.

When?

When you find dirt or dust.

How?

- Use a vacuum cleaner to remove dust.
- If you cannot remove dirt or dust completely, soak the filter in lukewarm water with neutral liquid detergent and clean with a sponge.
- After washing the filter, drain it.
- Smooth the filter by hand and dry it well in the shade.

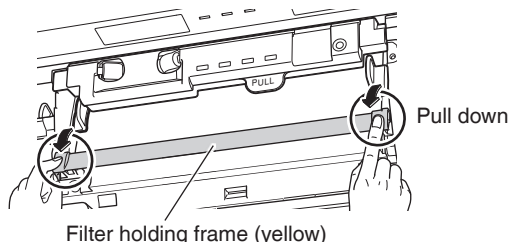
Attention

- Do not disassemble the air filter.

Removing the air filter

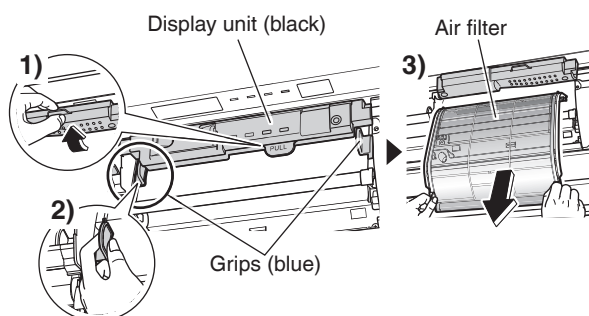
1. Pull down the filter holding frame (yellow).

- The tabs of the filter holding frame (yellow) are provided one on each side.



2. Pull out the air filter.

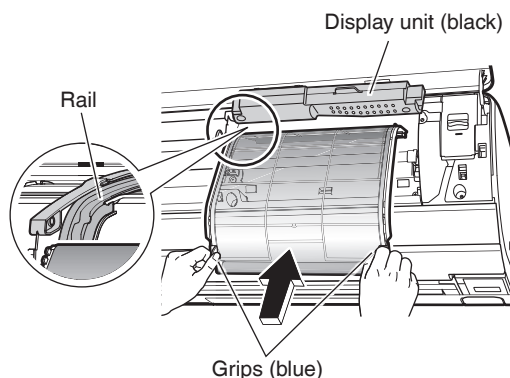
- 1) Hold the PULL tab on the display unit (black), direct the unit upward.
- 2) Raise the grips of the air filter (blue) upward to the front.
- 3) Pull the grips downward.



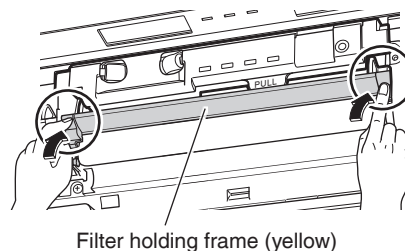
Attaching the air filter

1. Hold the grips (blue) and insert the filter along the rail.

- After attaching the air filter, direct the display unit (black) downward.



2. Push up the filter holding frame (yellow) until it clicks.



If the frame is not securely locked, the front panel may be damaged.

After cleaning, start the CLEANING FILTER operation to check that the air filter operates correctly. ► **Page 28**