

13.2 <BRP072A42> Wireless LAN Connecting Adaptor

Safety precautions

◆ The following describes the meanings of pictorial symbols used in this documentation.

Give this installation manual to the customer when installation is completed.

◆ To conduct a test run of the air conditioner, complete according to the installation manual for the air conditioner unit.



Warning

Situations which could result in death or serious injury.

When installing:

- Request installation by your dealer or a technician. (Can cause electric shock or fire.)
- Always use the accessories and specified parts for installation. Be sure to follow the directions in this installation manual. (Can cause the unit to fall, electric shock or fire.)
- Electrical work must be implemented according to "Technical standards for electrical equipment," "Indoor wiring regulations", and this installation manual. Always use a dedicated circuit. (Can cause electric shock or fire.)
- Always turn off the power supply when installing. (Touching the electrical parts can cause an electric shock.)

- Do not allow this product to get wet or use it when bathing or similar activities using water. (Can cause electric shock or fire.)
- Do not use this product near medical equipment or persons using cardiac pacemakers or defibrillators. This product may cause life-threatening electromagnetic interference.
- Do not use this product near auto-control equipment such as automatic doors or fire alarm equipment. (Can cause accidents due to erroneous equipment behavior.)

- Immediately disconnect the air conditioner power plug if there is abnormal odor or sound, when it is overheating, or smoking. (Can cause fire or malfunction.)
 - ◆ Request an inspection by your dealer.
- Disconnect the air conditioner power plug if the product was dropped or the case is damaged. (Can cause fire or electric shock.)
 - ◆ Request an inspection by your dealer.

When using:

- Do not disassemble, modify, or repair. (Can cause fire, electric shock or injury.)
- Do not handle this product with wet hands. (Can cause electric shock or fire.)

Caution

Situations which could result in damage or physical injury.

When installing:

- Do not install where flammable gas leaks can occur. (Can cause fire.)
- Grip the connector when disconnecting the connecting cord from the outlet. (Otherwise fire or electric shock can occur.)

When using:

- Do not use where small children can get access. (Can cause injuries.)
- Do not use this product near a microwave oven. (This can affect Wireless LAN communications.)

Accessories

Check if the following accessories are included in your package.

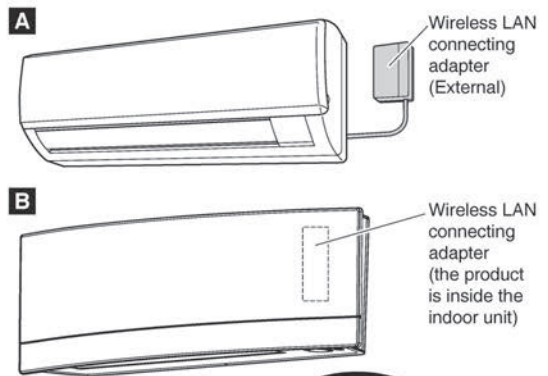
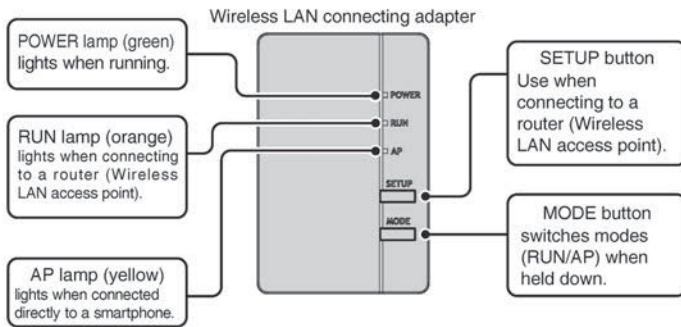
	(A) Wireless LAN connecting adaptor	(B) Serial number seal ※1	(C) Installation manual	(D) Connection cord (1.6 m) ※2	(E) Fastening seal	(F) Mounting screw
Model						
	1 pc	1 sheet	1 pc	1 pc	1 pc	2 pcs

※1 ◆ Affix to the seal attachment on the back face of this sheet and store in a safe place.

※2 ◆ Do not use extension or other cords.

◆ Some models already have this cord installed in the indoor unit.

Main components



Installation

Installation Work

1 Attach the Wireless LAN connecting adapter to indoor unit.

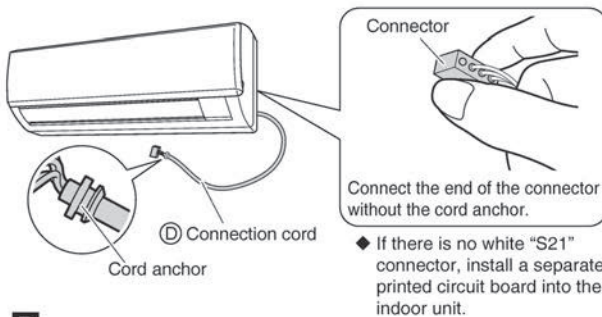
⚠ Danger
Always turn off the power supply when installing. (Touching the electrical parts can cause an electric shock.)

■ In the case of **B**

◆ Some models already have the connection cord **D** installed in the indoor unit. In such a case, please proceed from **B**.

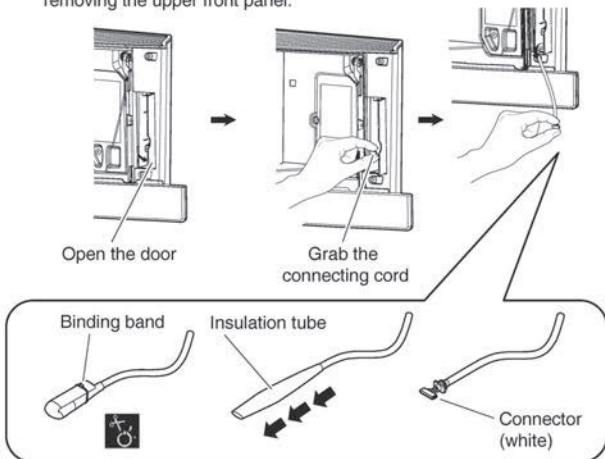
■ Attach connection cord **D** to indoor unit.

Remove the front grill of the indoor unit, then connect the connector of connection cord **D** to the white "S21" connector on the electrical wiring box.
◆ For instructions on how to remove the front grill or run the connection cord **D** into place, see the installation manual of the particular air conditioner. (Connection cord **D** can connect to connection cord HA.)



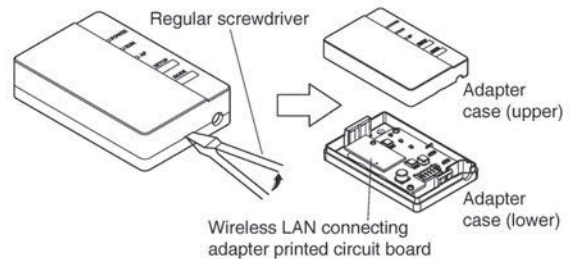
B

Remove the upper front panel from the indoor unit and open the door, grab the connecting cord with your fingers and pull it out, then remove the binding band and pull the insulation tube off the connecting cord.
◆ Refer to your air conditioner's installation manual for details on removing the upper front panel.



2 Remove the adapter case (upper).

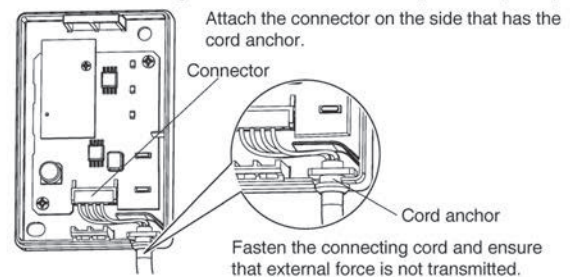
Press a regular screwdriver into the dent between the upper and lower cases to remove. (Be careful not to damage the case.)



3 Attach connecting cord to the product.

Attach the connecting cord connector (white).

◆ Fasten the connecting cord to the notch in the adapter case (lower).



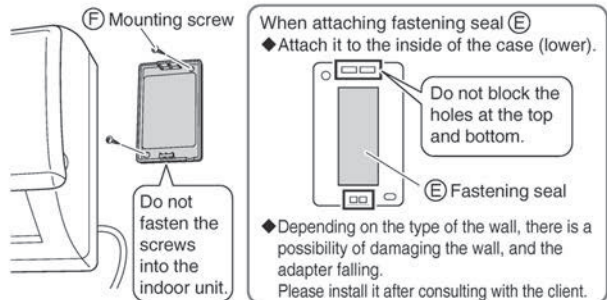
■ In the case of **A**

Install the adapter case (lower).

◆ Install the adapter case (upper) so as to allow it to be easily removed for maintenance.

◆ Do not install outdoors or anywhere it is likely to get wet.

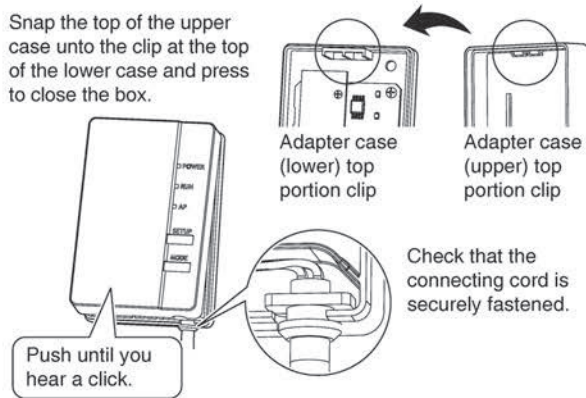
◆ Do not install it near the sensor part of the indoor unit.



Do not cover up parts of the unit with fastening seal **E** or mounting screw **F**, as they may require maintenance in the future. (Simply set the connecting adapter in place.)

4 Return the adapter case to its original state.

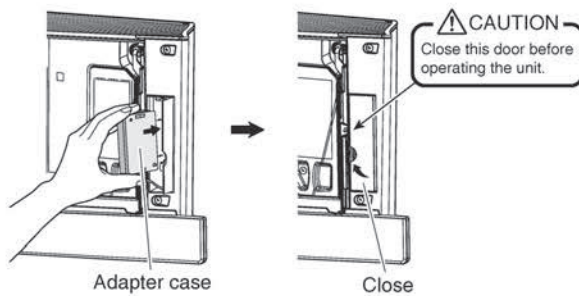
Snap the top of the upper case unto the clip at the top of the lower case and press to close the box.



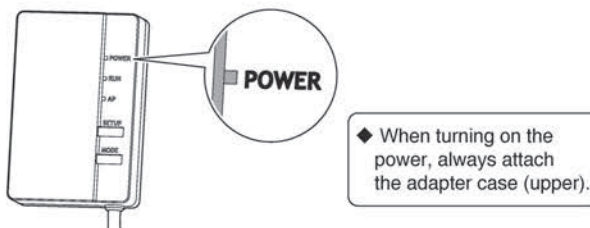
5 Inserting Wireless LAN connecting adapter to indoor unit.

■ In the case of **B**

Grab the adapter case with your fingers, insert it back into the indoor unit and close the door.



6 Turn on the power supply, wait until the initialization is completed (the lower panel is in the CLOSED position). Open the door, remove the WLAN adapter and check that the [POWER] lamp for the product lights. After checking, return the WLAN adapter into the unit and close the door.



[Note]

- If an upgrade is available for your adapter, the notification icon "i" will be displayed on the units overview screen. Tap it to upgrade your firmware.



- If you are connecting multiple systems, you can change the system name in the "More" system menu.

The SSID and KEY
The [SSID] and [KEY] listed on the **B** serial number seal in the accessory parts are necessary when connecting the air conditioner and the smartphone using Wireless LAN.

Affix the **B** serial number seal for the accessory parts here, and store in a safe place.

Configuration

Connection
Settings
Section

The customer is responsible for providing the following.

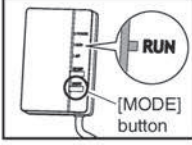
- Smartphone or tablet PC
(Supported OS: Android 2.3.3 or later; iOS 5.0 or later.)
- Internet line and communicating device
(Modem/router or a similar device)
- Wireless LAN access point
(The corresponding channel for the Wireless LAN connecting adapter is 1-11.)
- [DAIKIN Mobile Controller] (No Cost)

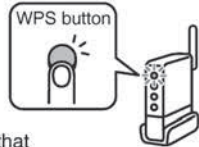
Installation method of Online controller

<p>For Android Phones</p> <p>(1) Open the [Google Play].</p> <p>(2) Search for [D-Mobile].</p> <p>(3) Follow the directions on the screen to install.</p>	<p>For iPhones</p> <p>(1) Open the [App Store].</p> <p>(2) Search for [D-Mobile].</p> <p>(3) Follow the directions on the screen to install.</p>
---	--

Simple Settings The setup is simple if there is a [WPS] button on the router (Wireless LAN access point).

- 1** Check that the [RUN] lamp is blinking.

 - ◆ If [AP] is blinking or lit, hold down the [MODE] button on the WLAN adapter for approximately 2 seconds until the [RUN] lamp blinks.
- 2** Hold down the [WPS] button on the router (Wireless LAN access point).

 - ◆ Operation of the [WPS] differs according to the router (Wireless LAN access point). Please refer to the documentation that comes with your router for more information.
- 3** Hold down the [SETUP] button on the product for approximately 2 seconds.

 - ◆ The [RUN] lamp on the product blinks more quickly. When the WLAN adapter and the router (Wireless LAN access point) are connected, this lamp lights. If you fail to connect, please try again from step 1 of "Simple Settings". (It may not be possible to make the "Simple Settings", depending on compatibility with the router.)
- 4** Connect the smartphone (or tablet PC) and the router (Wireless LAN access point).

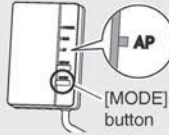
 - ◆ Connection is possible by for example selecting the SSID of your router (Wireless LAN access point) from "Wi-Fi" in the smartphone's settings and entering the router's password.
- 5** Tap the [D-Mobile] that was installed.

 - ◆ Follow the directions on the screen to make the settings and for operation.

Setting Details

If connections cannot be done simply using [WPS], connect using the following method.

- 1 Check that the [AP] lamp is lit. If the [AP] lamp is off, hold down the [MODE] button on the product for approximately 2 seconds, then wait for up to 10 seconds until the [AP] lamp lights.
- 2 Directly connect the smartphone (tablet PC) and adapter to the Wireless LAN without going through the router (Wireless LAN access point).
 - ◆ Select SSID (DaikinAP *****) listed on the "Wi-Fi" ② serial number seal using the smartphone settings, or the Wireless LAN connecting adapter, and enter the KEY.
- 3 Tap [D-Mobile] that was installed.
- 4 Make the wireless connection settings.



(4) On the Settings screen, tap on [WLAN connection].

- (5) ① On the WLAN connection screen, tap [Search for SSID] and follow the dialogue to operate.
- ② Select the SSID from the pull-down menu.
- ③ Input the password.
- ④ Tap [Save].

(6) On the WLAN connection screen, tap on [Connect] and follow the instructions on the smartphone.

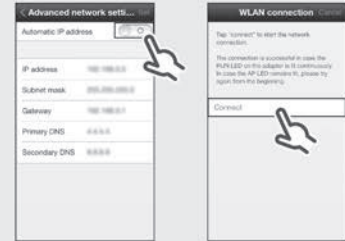


- (1) On the Login screen, tap on [Units].
- (2) On the Units screen, tap on [Unit name].
- (3) On the Unit name screen, tap on [More].



(7) After implementing the setting above and the product and router (Wireless LAN access point) are connected, the [RUN] lamp will light. If this blinks for one minute or longer, check the power to the router (Wireless LAN access point), network name and the password and start again from the first procedure.

* For manual WLAN connection setting, tap on [Advanced network setting], turn off Automatic IP address, fill in the required information of your wifi router, then tap on [Set] and then tap on [Connect] and follow the instructions on the smartphone. Then continue as in step (7).



- 5 Connect the smartphone (or tablet PC) and the router (Wireless LAN access point).
 - ◆ See the accessory operations manual for the router (Wireless LAN access point) for details.

See the operations manual posted on our homepage for details.

Troubleshooting

The following table provides brief descriptions of how to handle trouble or uncertainties when you install the product or make connection settings. See the homepage for details.

When this happens	Explanation and where to check
None of the lamps light.	→ Check the installation. The product is behaving incorrectly. → Turn off the air conditioner power and restart it.
If you cannot find the system (air conditioner) on the system list screen, the product is not installed correctly.	Product lamp is extinguished. → Check that the RUN lamp is lit. → Check that the power is on. → Make the simple settings or detailed settings again. → Move the router (Wireless LAN access point) closer to the product. → It is possible that you are using a smartphone, access point or wireless router that is not supported. See the homepage for details.